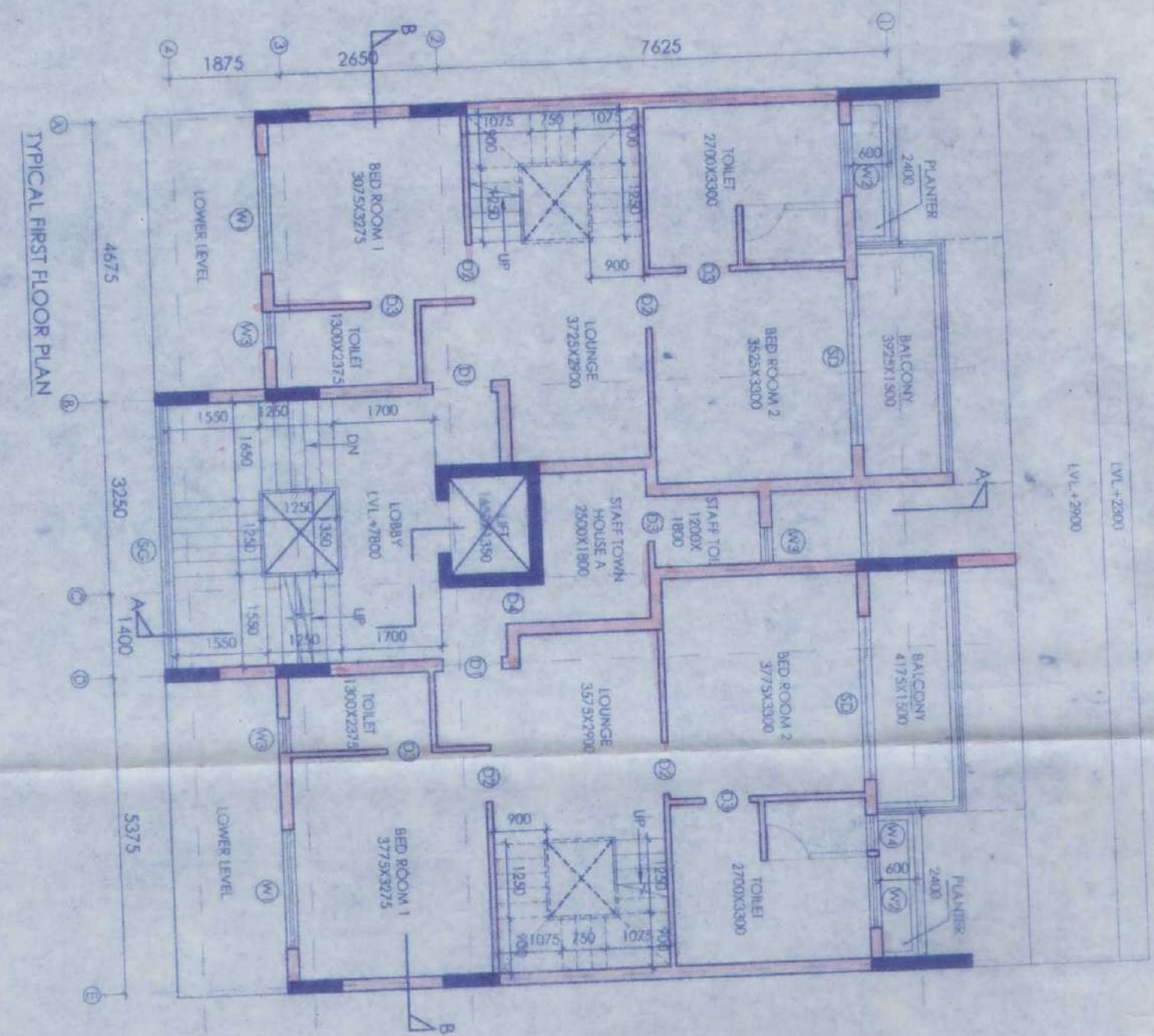
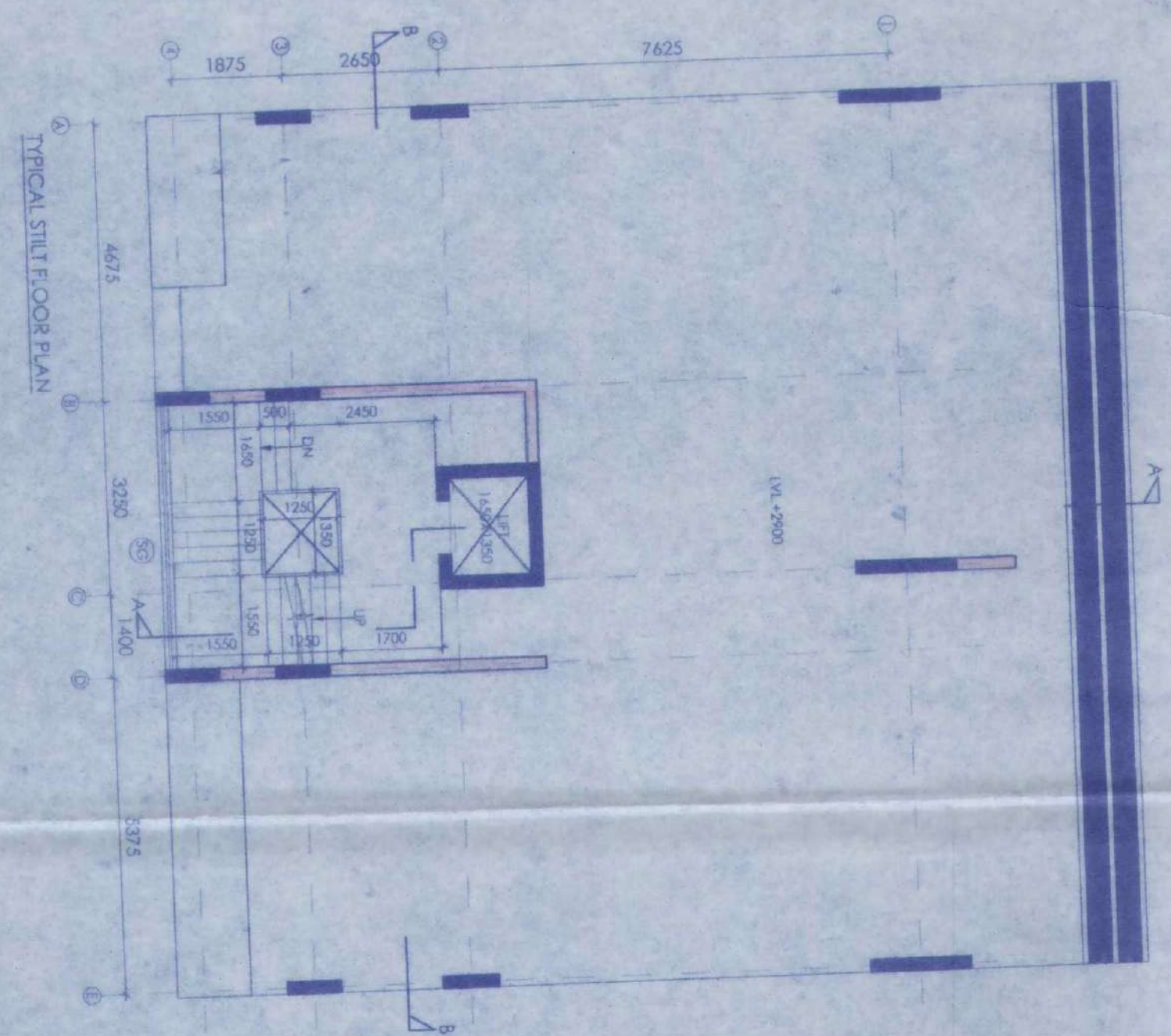
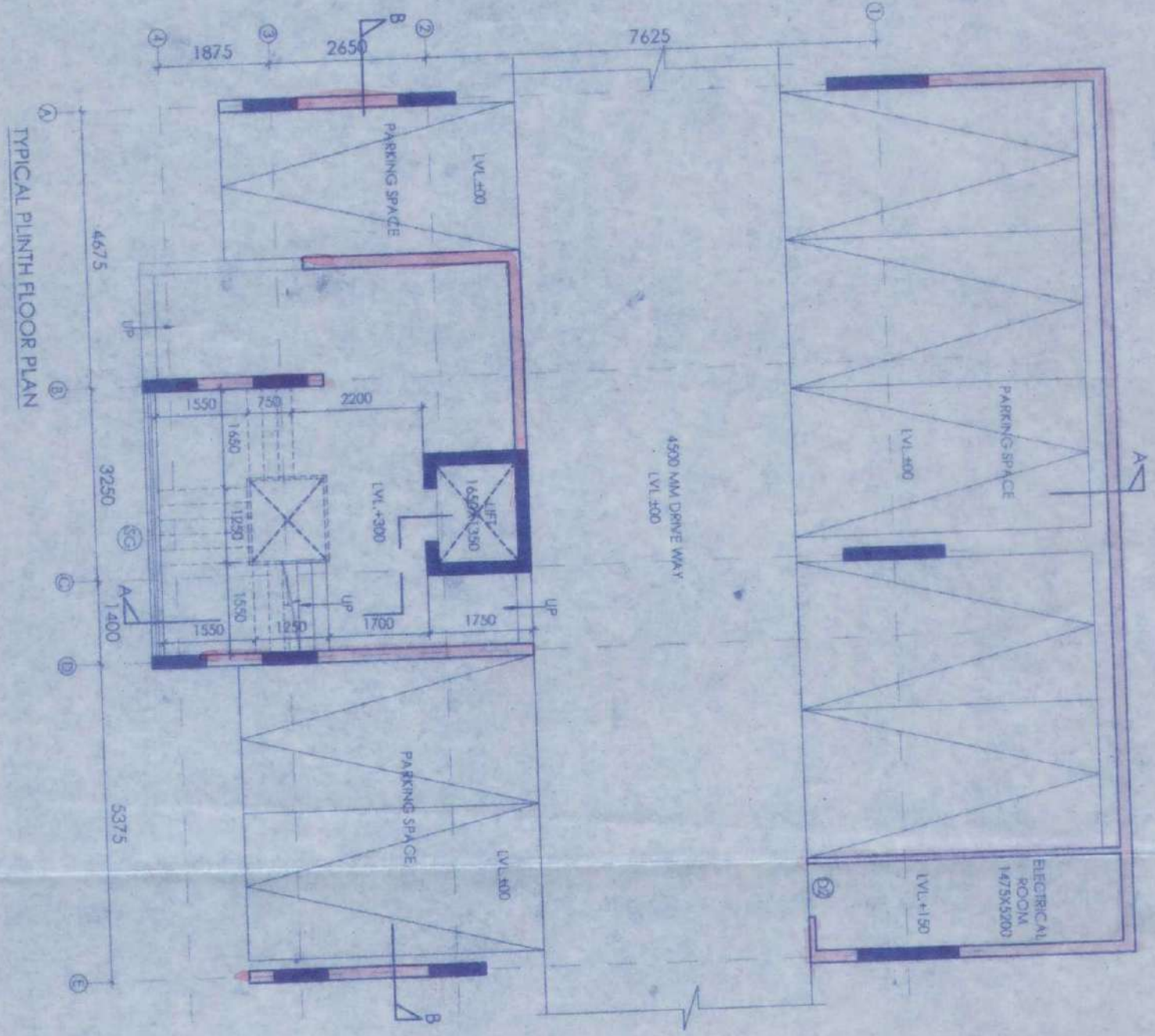
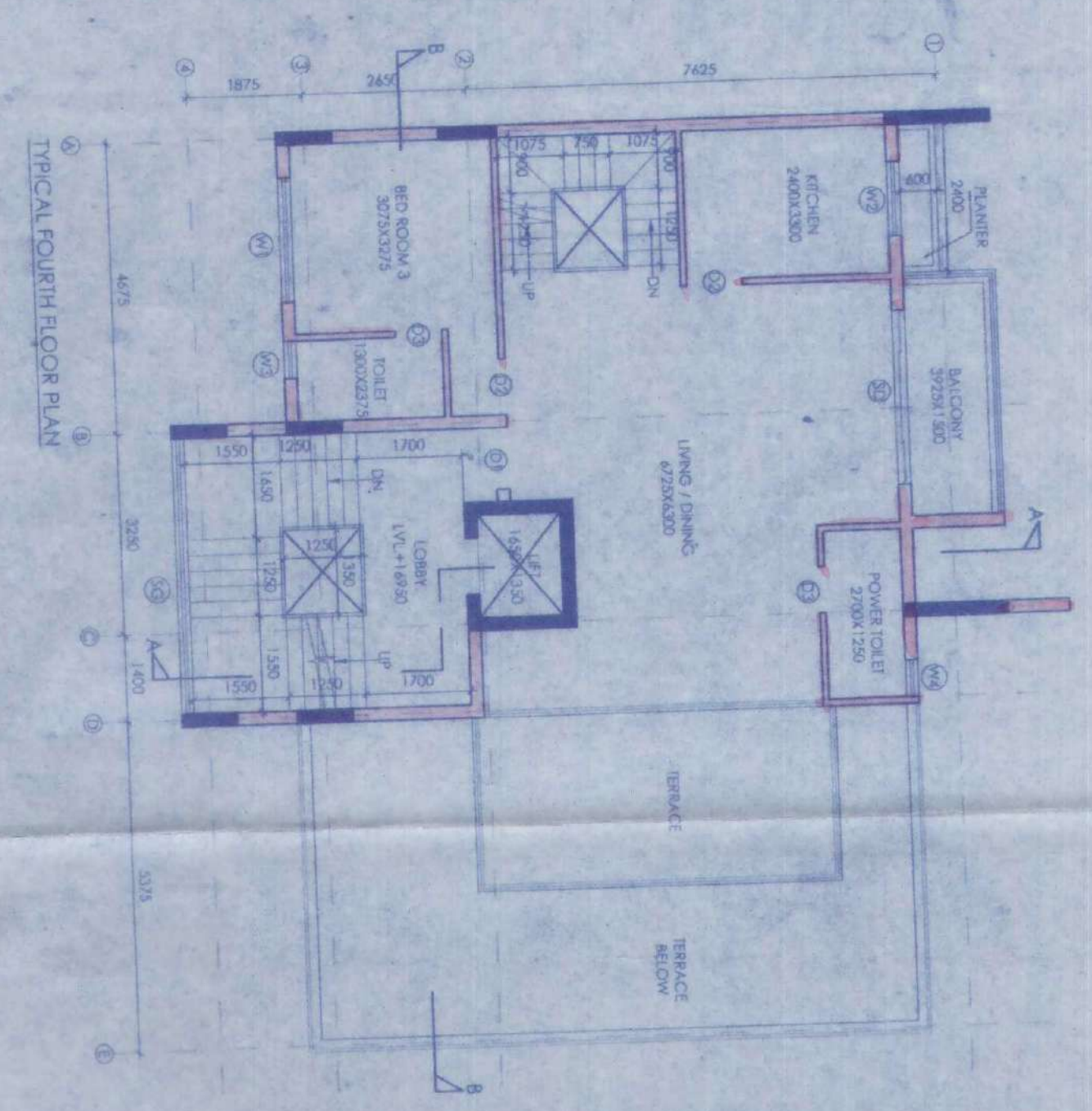
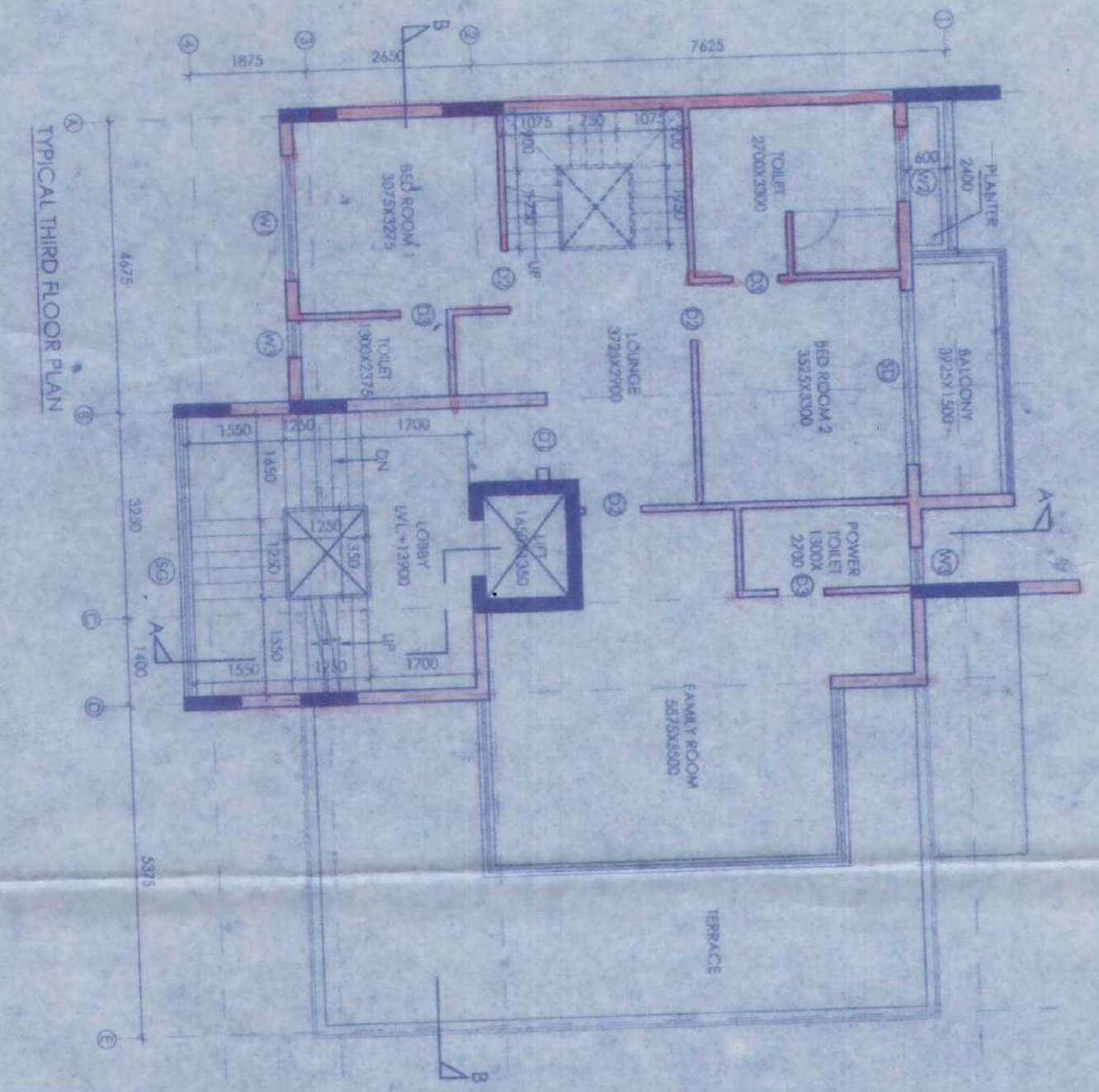
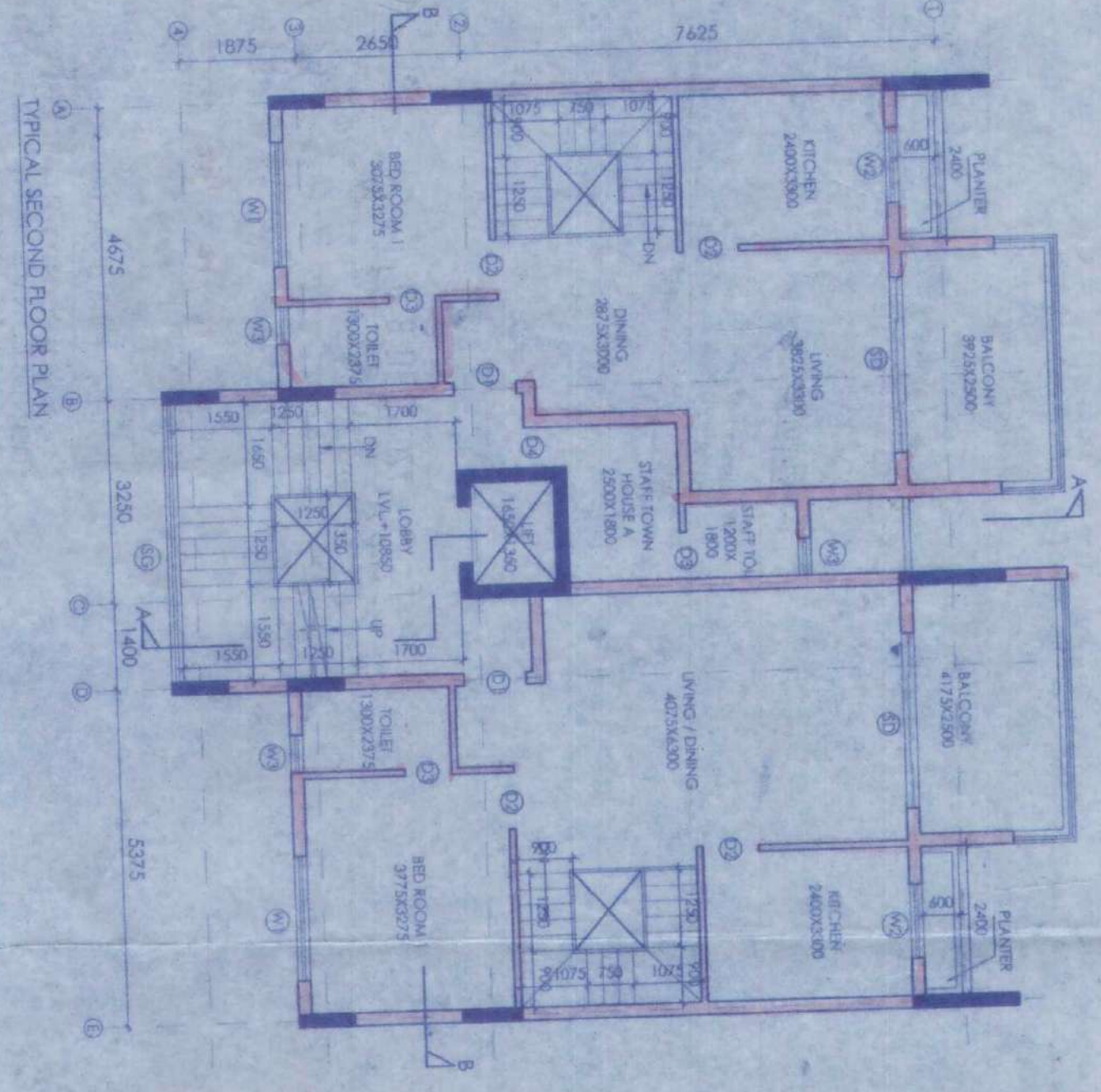


NO.	DESCRIPTION	UNIT	QTY	PRICE	TOTAL
01	1000	2.10	2.10	---	---
02	900	2.10	2.10	---	---
03	800	2.10	2.10	---	---
04	700	2.10	2.10	---	---
05	600	2.10	2.10	---	---
06	500	2.10	2.10	---	---
07	400	2.10	2.10	---	---
08	300	2.10	2.10	---	---
09	200	2.10	2.10	---	---
10	100	2.10	2.10	---	---
11	000	2.10	2.10	---	---
12	000	2.10	2.10	---	---
13	000	2.10	2.10	---	---
14	000	2.10	2.10	---	---
15	000	2.10	2.10	---	---
16	000	2.10	2.10	---	---
17	000	2.10	2.10	---	---
18	000	2.10	2.10	---	---
19	000	2.10	2.10	---	---
20	000	2.10	2.10	---	---

1. ON-THE-SPOT DIMENSIONS SHALL BE FOLLOWED.
2. ON-THE-SPOT DIMENSIONS SHALL BE FOLLOWED.
3. ON-THE-SPOT DIMENSIONS SHALL BE FOLLOWED.
4. ON-THE-SPOT DIMENSIONS SHALL BE FOLLOWED.
5. ON-THE-SPOT DIMENSIONS SHALL BE FOLLOWED.
6. ON-THE-SPOT DIMENSIONS SHALL BE FOLLOWED.
7. ON-THE-SPOT DIMENSIONS SHALL BE FOLLOWED.
8. ON-THE-SPOT DIMENSIONS SHALL BE FOLLOWED.
9. ON-THE-SPOT DIMENSIONS SHALL BE FOLLOWED.
10. ON-THE-SPOT DIMENSIONS SHALL BE FOLLOWED.



ALOK ROY
 Director / Authorized Signatory
 M/S SWAN ENGINEERING COMPANY
 4, BROAD STREET
 KOLKATA-700019

ANKIT AGARWALA
 Director / Authorized Signatory
 M/S SWAN ENGINEERING COMPANY
 4, BROAD STREET
 KOLKATA-700019

Subir Kumar Basu
 Director / Authorized Signatory
 M/S SWAN ENGINEERING COMPANY
 4, BROAD STREET
 KOLKATA-700019

PROJECT: PROPOSED RESIDENTIAL BUILDING, 4th FLOOR, 5th FLOOR, 6th FLOOR, 7th FLOOR, 8th FLOOR, 9th FLOOR, 10th FLOOR, 11th FLOOR, 12th FLOOR, 13th FLOOR, 14th FLOOR, 15th FLOOR, 16th FLOOR, 17th FLOOR, 18th FLOOR, 19th FLOOR, 20th FLOOR, 21st FLOOR, 22nd FLOOR, 23rd FLOOR, 24th FLOOR, 25th FLOOR, 26th FLOOR, 27th FLOOR, 28th FLOOR, 29th FLOOR, 30th FLOOR, 31st FLOOR, 32nd FLOOR, 33rd FLOOR, 34th FLOOR, 35th FLOOR, 36th FLOOR, 37th FLOOR, 38th FLOOR, 39th FLOOR, 40th FLOOR, 41st FLOOR, 42nd FLOOR, 43rd FLOOR, 44th FLOOR, 45th FLOOR, 46th FLOOR, 47th FLOOR, 48th FLOOR, 49th FLOOR, 50th FLOOR, 51st FLOOR, 52nd FLOOR, 53rd FLOOR, 54th FLOOR, 55th FLOOR, 56th FLOOR, 57th FLOOR, 58th FLOOR, 59th FLOOR, 60th FLOOR, 61st FLOOR, 62nd FLOOR, 63rd FLOOR, 64th FLOOR, 65th FLOOR, 66th FLOOR, 67th FLOOR, 68th FLOOR, 69th FLOOR, 70th FLOOR, 71st FLOOR, 72nd FLOOR, 73rd FLOOR, 74th FLOOR, 75th FLOOR, 76th FLOOR, 77th FLOOR, 78th FLOOR, 79th FLOOR, 80th FLOOR, 81st FLOOR, 82nd FLOOR, 83rd FLOOR, 84th FLOOR, 85th FLOOR, 86th FLOOR, 87th FLOOR, 88th FLOOR, 89th FLOOR, 90th FLOOR, 91st FLOOR, 92nd FLOOR, 93rd FLOOR, 94th FLOOR, 95th FLOOR, 96th FLOOR, 97th FLOOR, 98th FLOOR, 99th FLOOR, 100th FLOOR.

4

APARTMENT BUILDING

ORIGINAL COPY / DUPLICATE COPY
DEVIATION WOULD MEAN
DEMOLITION
FINAL / PROVISIONAL LY SANCTIONED
RESIDENTIAL BUILDING PLAN

Necessary Steps should be taken for the safety
of the lives of the adjoining public and private
properties during construction.

Plan No. III-B/MM/BLDG/2/ 332 / 21-2 /SP/BP
Date: 14/8/21
Name: M/S Swan Engineering Company
Add: Krishnangar
Ward No. 20

[Signature]
Sub Asst Engineer
Building Section
Mahasitola Municipality

[Signature]
08 DEC 2022
CIC Member
Social Welfare
Mahasitola Municipality

Before starting any construction site must conform
with the plan Sanctioned and all the Conditions as proposed
in the plan. The validity of the written permission to execute
the work is subject to the above conditions.

BUILDING PLAN SANCTIONED DATE: 8/12/22

Valid upto:

Renewal Within:

Construction should be made strictly according to sanctioned plan *[Signature]*